

1 PHASE OR 3 PHASE SELF-CONTAINED UNDERGROUND METER INSTALLATION

COOPERATIVE WILL:
INSTALL METER SERVICE
CABLE, CONNECTIONS INSIDE
OF TRANSFORMER, SECONDARY
OR DIP POLE ARE INSTALLED
BY MVEC

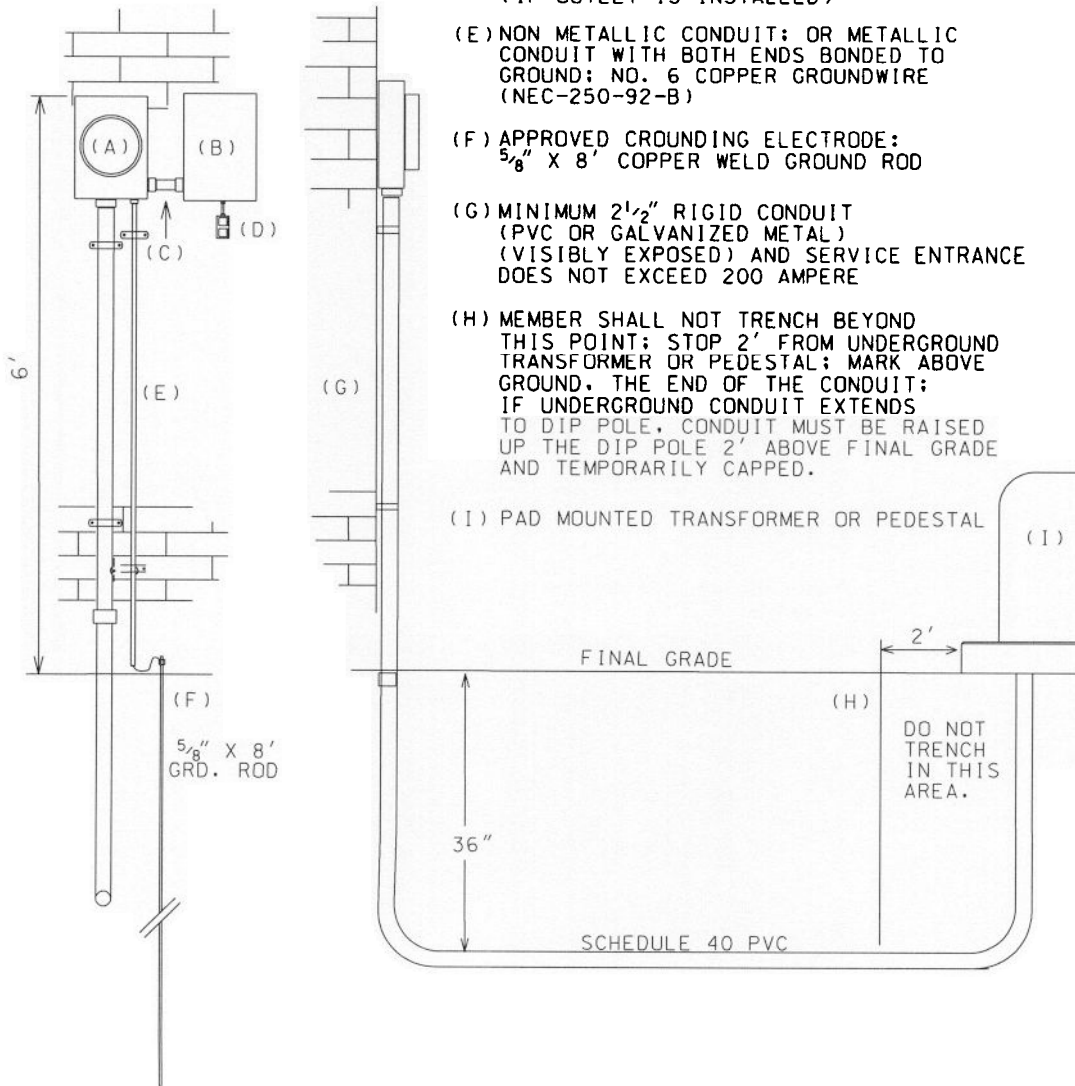
NOTE: MVEC WILL DO THE WIRE
INSTALLATION INSIDE THE
TRANSFORMER, PEDESTAL OR FROM
THE DIP POLE.

MEMBER WILL:
FURNISH & INSTALL METER BASE AND BOND IT TO
GROUND. FURNISH AND INSTALL ALL REQUIRED
MATERIALS.

NOTE:
ALL BASES AND DEVICES SHALL BE BONDED
TO GROUND

TRENCH, BACKFILL, FURNISH AND INSTALL
2" CONDUIT (SCHEDULE 40 PVC) TO
ACCOMMODATE 1/0 TO 350 MCM SERVICE
FURNISH PULL STRING FROM THE METER
AS REQUIRED TO THE UNDERGROUND
TRANSFORMER, PEDESTAL OR DIP POLE.

- (A) METER BASE (SEE METER BASE DETAIL)
- (B) MEMBER DISCONNECT
- (C) MINIMUM 2" CLEARANCE BETWEEN ALL ENCLOSURES. MINIMUM 200 AMPERE ENTRANCE
- (D) REQUIRED GFCI RECEPTACLE OR GFCI PROTECTION WITH WEATHER PROOF COVER; 120 VOLTS OUTLET. (IF OUTLET IS INSTALLED)
- (E) NON METALLIC CONDUIT; OR METALLIC CONDUIT WITH BOTH ENDS BONDED TO GROUND; NO. 6 COPPER GROUNDWIRE (NEC-250-92-B)
- (F) APPROVED GROUNDING ELECTRODE: 5/8" X 8' COPPER WELD GROUND ROD
- (G) MINIMUM 2 1/2" RIGID CONDUIT (PVC OR GALVANIZED METAL) (VISIBLELY EXPOSED) AND SERVICE ENTRANCE DOES NOT EXCEED 200 AMPERE
- (H) MEMBER SHALL NOT TRENCH BEYOND THIS POINT; STOP 2' FROM UNDERGROUND TRANSFORMER OR PEDESTAL; MARK ABOVE GROUND. THE END OF THE CONDUIT; IF UNDERGROUND CONDUIT EXTENDS TO DIP POLE, CONDUIT MUST BE RAISED UP THE DIP POLE 2' ABOVE FINAL GRADE AND TEMPORARILY CAPPED.



(I) PAD MOUNTED TRANSFORMER OR PEDESTAL