

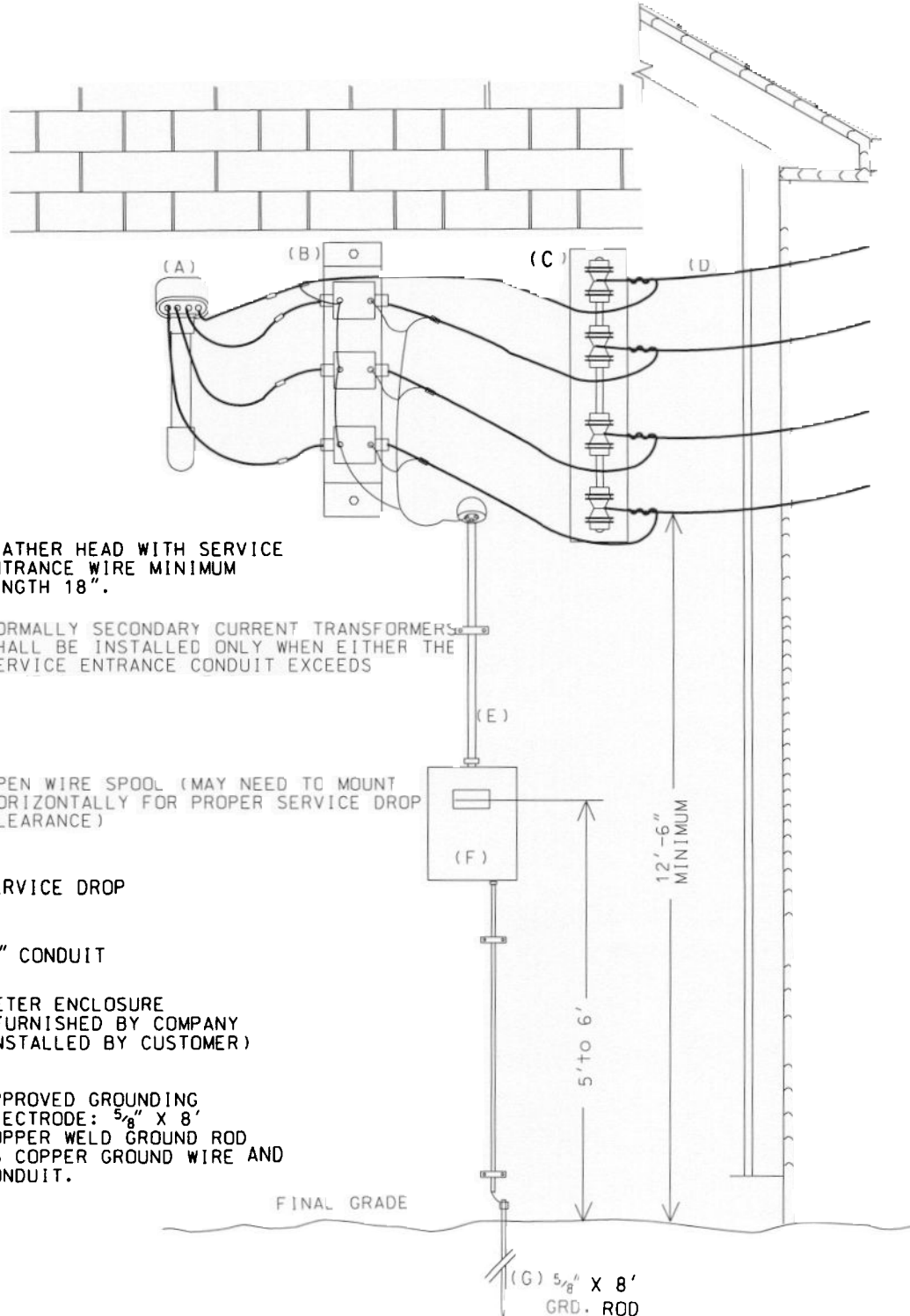
(2001)

CURRENT TRANSFORMERS- CT METERING (TRANSFORMERS MOUNTED ON BUILDING)

COOPERATIVE WILL:
FURNISH, INSTALL AND MAINTAIN SERVICE DROP, CURRENT TRANSFORMER, METER ENCLOSURE AND MAKE CONNECTIONS TO CUSTOMER'S SERVICE ENTRANCE CONDUCTORS.(WIRE) FURNISH AND INSTALL WIRING BETWEEN INSTRUMENT TRANSFORMER AND METER. FURNISH METER ENCLOSURE WIRE SPOOL(-7 POINT RACK), CT BRACKET.

MEMBER WILL:
FURNISH, INSTALL AND MAINTAIN SERVICE ENTRANCE AND ALL OTHER REQUIRED MATERIALS.

FURNISH, INSTALL AND MAINTAIN 1" MINIMUM CONDUIT AND FITTINGS BETWEEN INSTRUMENT TRANSFORMER AND INSTALL CT BRACKET, AND WIRE SPOOL.



(A) WEATHER HEAD WITH SERVICE ENTRANCE WIRE MINIMUM LENGTH 18".

(B) NORMALLY SECONDARY CURRENT TRANSFORMERS SHALL BE INSTALLED ONLY WHEN EITHER THE SERVICE ENTRANCE CONDUIT EXCEEDS

(C) OPEN WIRE SPOOL (MAY NEED TO MOUNT HORIZONTALLY FOR PROPER SERVICE DROP CLEARANCE)

(D) SERVICE DROP

(E) 1" CONDUIT

(F) METER ENCLOSURE (FURNISHED BY COMPANY INSTALLED BY CUSTOMER)

(G) APPROVED GROUNDING ELECTRODE: 5/8" X 8' COPPER WELD GROUND ROD #6 COPPER GROUND WIRE AND CONDUIT.

FINAL GRADE

(G) 5/8" X 8' GRD. ROD