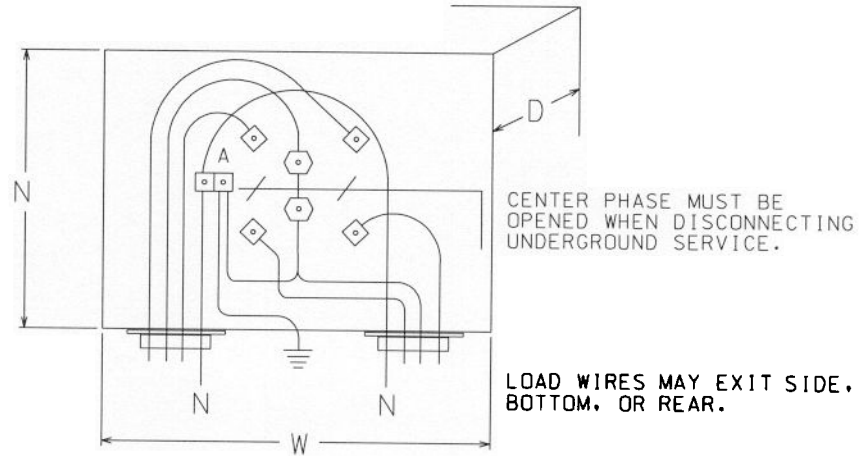
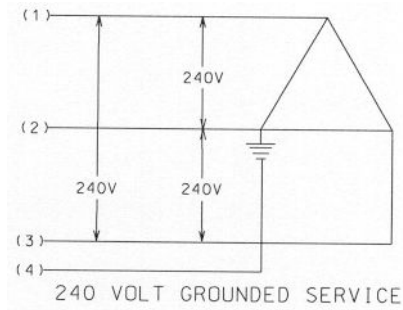
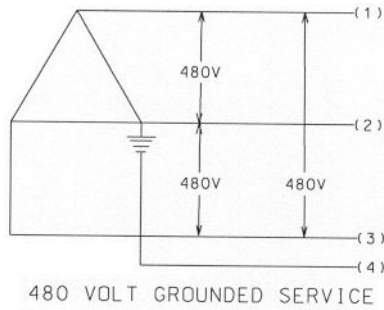


UNDERGROUND 3W 3 PHASE 5 TERMINAL METER BASE 240 OR 480 VOLT WITH 4th WIRE

(OVERHEAD TRANSFORMER ONLY WITH UNDERGROUND SERVICE.)



ALL DIMENSIONS
ARE NOMINAL

- | | |
|-------------------------------|---|
| 200 AMPERE SOCKET
240 VOLT | H=19 ¹ / ₄ " , W=13 ¹ / ₄ " , D=5 ¹ / ₄ "
MAXIMUM WIRE SIZE 350MCM
MAXIMUM 75HP W/BYPASS AND JAW RELEASE |
| 200 AMPERE SOCKET
480 VOLT | H=19 ¹ / ₄ " , W=13 ¹ / ₄ " , D=5 ¹ / ₄ "
MAXIMUM WIRE SIZE 350MCM
MAXIMUM 150HP W/BYPASS AND JAW RELEASE |

NOTES:

1. WHEN USED ON 480 VOLT, THIS SOCKET WILL BE IDENTIFIED AS PER USE ON 480 VOLT ONLY.
2. NO. 6 COPPER- CONTINUOUS GROUND WIRE FROM METER BASE (CONNECTION "A") TO GROUND ROD