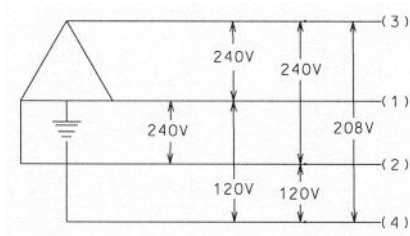
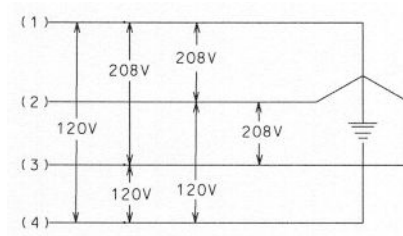


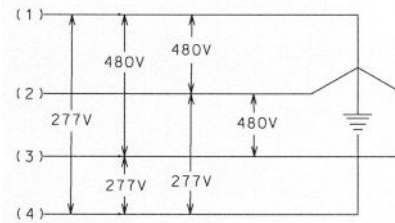
OVERHEAD 4W 3 PHASE 7 TERMINAL METER BASE



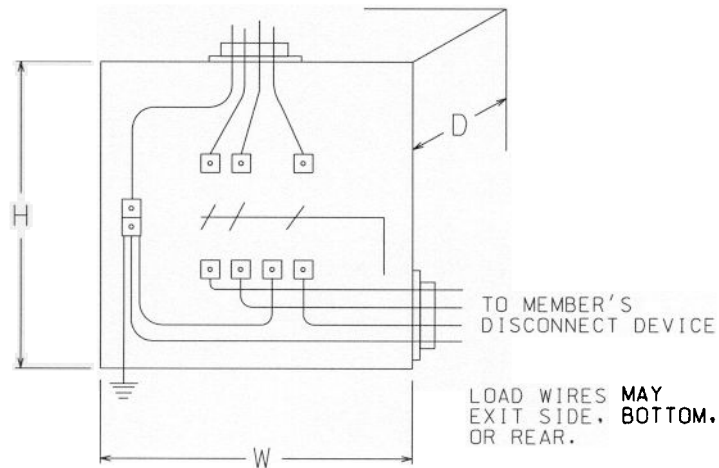
4W 3 PHASE 120/240 VOLT SERVICE



4W 3 PHASE 120/208 VOLT SERVICE



4W 3 PHASE 277/480 VOLT SERVICE



ALL DIMENSIONS
ARE NOMINAL

200 AMPERE METER BASE H=17", W=10", D=5³/₄", HUB=2¹/₂"
MAXIMUM WIRE SIZE 350MCM
BYPASS AND JAW RELEASE

320 AMPERE METER BASE H=26¹/₄", W=17³/₄", D=7", HUB=3"
MAXIMUM WIRE SIZE 600MCM
BYPASS AND JAW RELEASE

320 AMPERE METER BASE H=28¹/₄", W=13¹/₂", D=6", HUB=4"
MAXIMUM WIRE SIZE 600MCM
OR PARALLEL 4/0 - 350MCM
PER TERMINAL WITH BYPASS AND JAW RELEASE

NOTE: NO. 6 COPPER- CONTINUOUS GROUND WIRE
FROM METER BASE (CONNECTION "A") TO GROUND ROD.