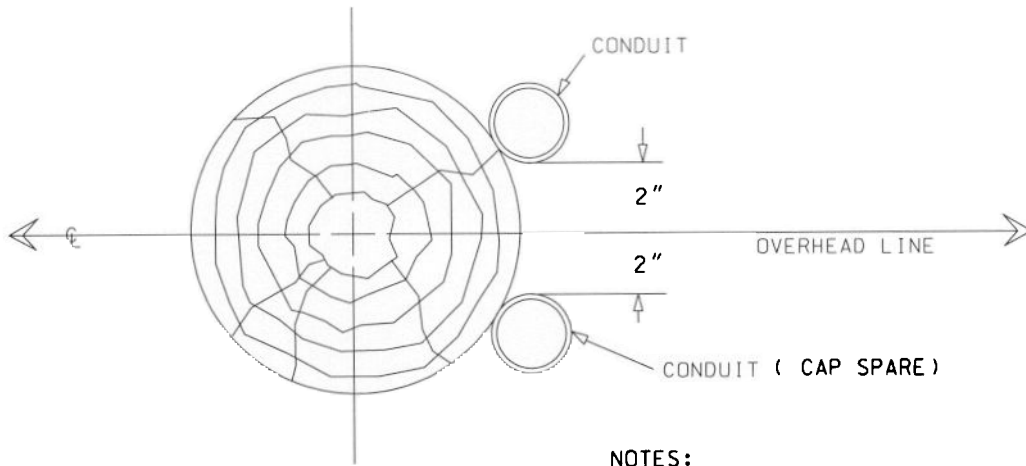


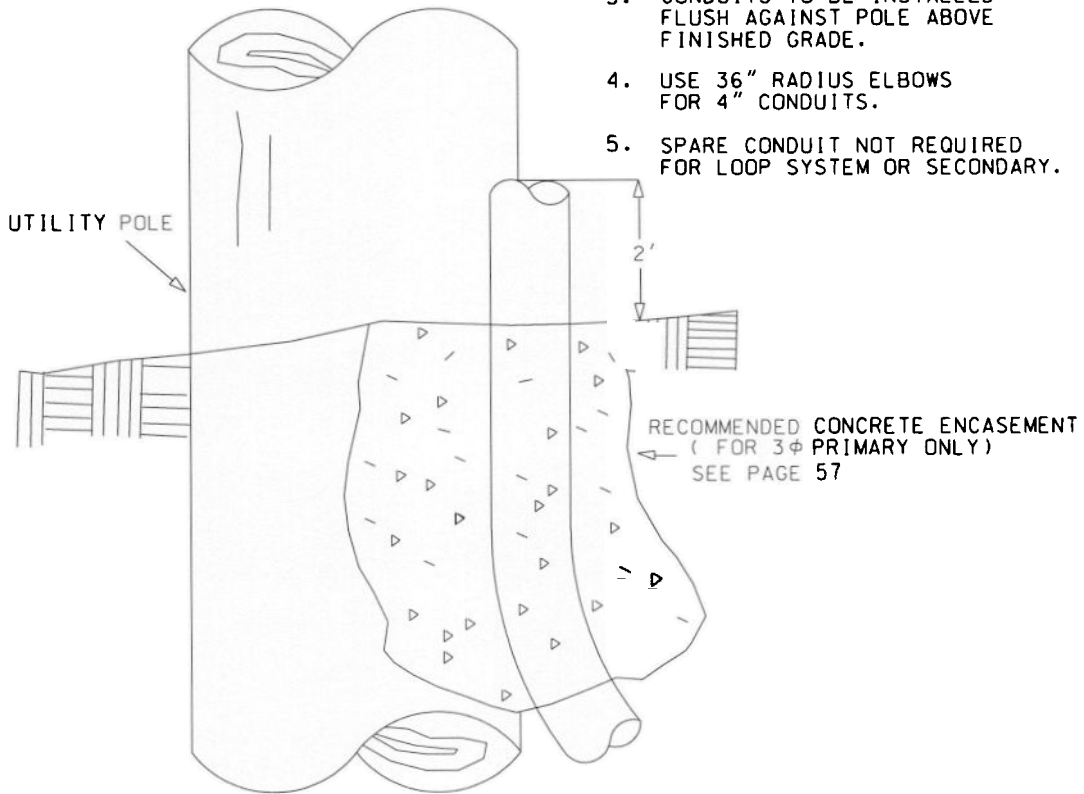
DETAIL OF CONDUIT INSTALLATION AT PRIMARY OR SECONDARY RISER POLE



TOP VIEW

NOTES:

1. MVEC TO INSTALL RISER POLE PRIOR TO CONDUIT INSTALLATION.
2. MVEC TO INSPECT & APPROVE CONDUIT FOR PROPER INSTALLATION PRIOR TO CONCRETE ENCASEMENT.
3. CONDUITS TO BE INSTALLED FLUSH AGAINST POLE ABOVE FINISHED GRADE.
4. USE 36" RADIUS ELBOWS FOR 4" CONDUITS.
5. SPARE CONDUIT NOT REQUIRED FOR LOOP SYSTEM OR SECONDARY.



SIDE VIEW