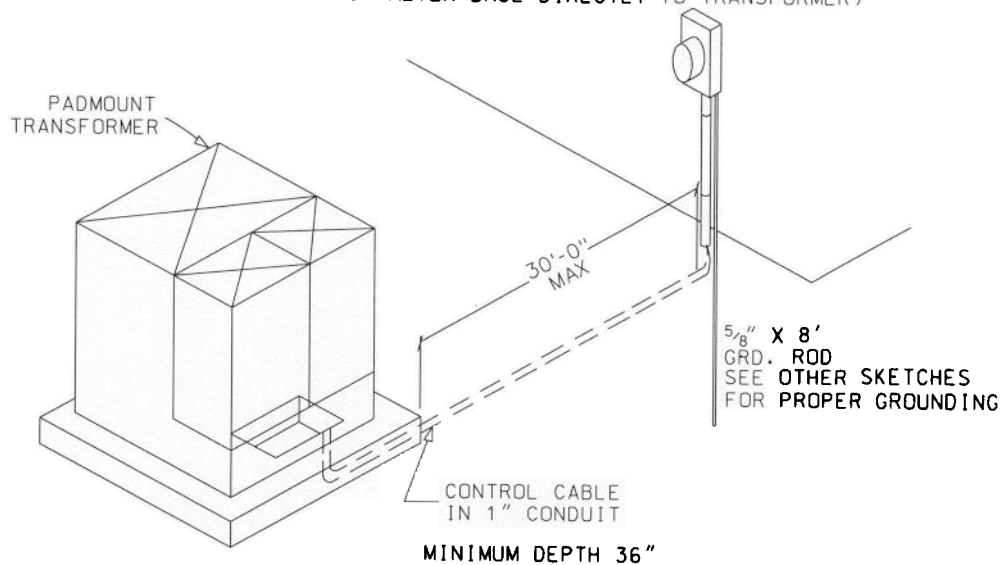
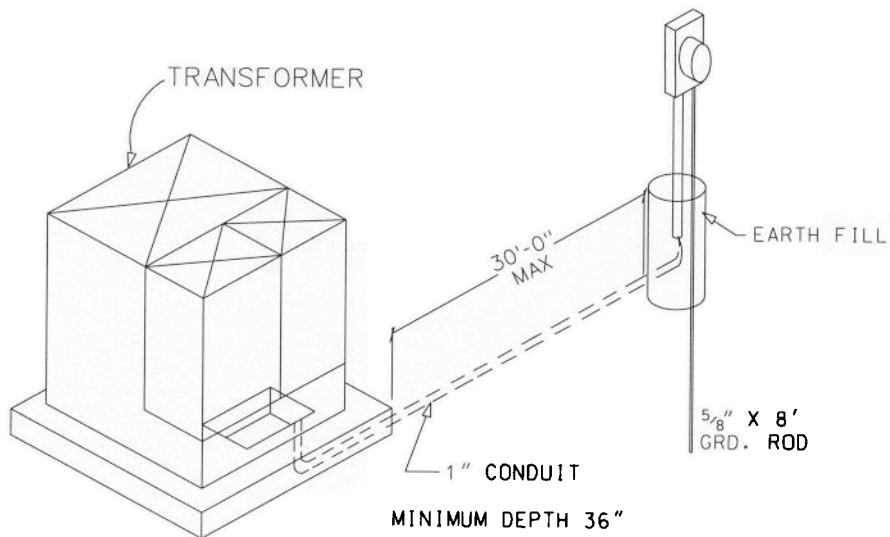


C.T METER INSTALLATION UNDERGROUND

(NOTE: DO NOT ATTACH METER BASE DIRECTLY TO TRANSFORMER)



METHOD 1



METHOD 2

NOTES:

METHOD 1:

1. PREFERRED METHOD FOR INSTALLATION OF METERING IS TO MOUNT METER SOCKET OR CABINET ON BUILDING WALL.
2. METER HEIGHT SHALL BE 5'-0" TO CENTER OF METER.
3. METER SOCKET MUST NOT BE ATTACHED DIRECTLY TO PADMOUNT TRANSFORMER.
4. CONDUIT SHALL BE USED FOR SECONDARY CONTROL WIRES TO METER SOCKET.

METHOD 2:

1. METHOD TO USE IF METER SOCKET OR CABINET MUST BE MOUNTED FREE STANDING.
2. METER SOCKET MUST NOT BE ATTACHED DIRECTLY TO PADMOUNT TRANSFORMER.
3. 5'-0" MINIMUM HEIGHT TO CENTER OF METER.
4. CONDUIT SHALL BE USED FOR SECONDARY CONTROL WIRES TO METER SOCKET.