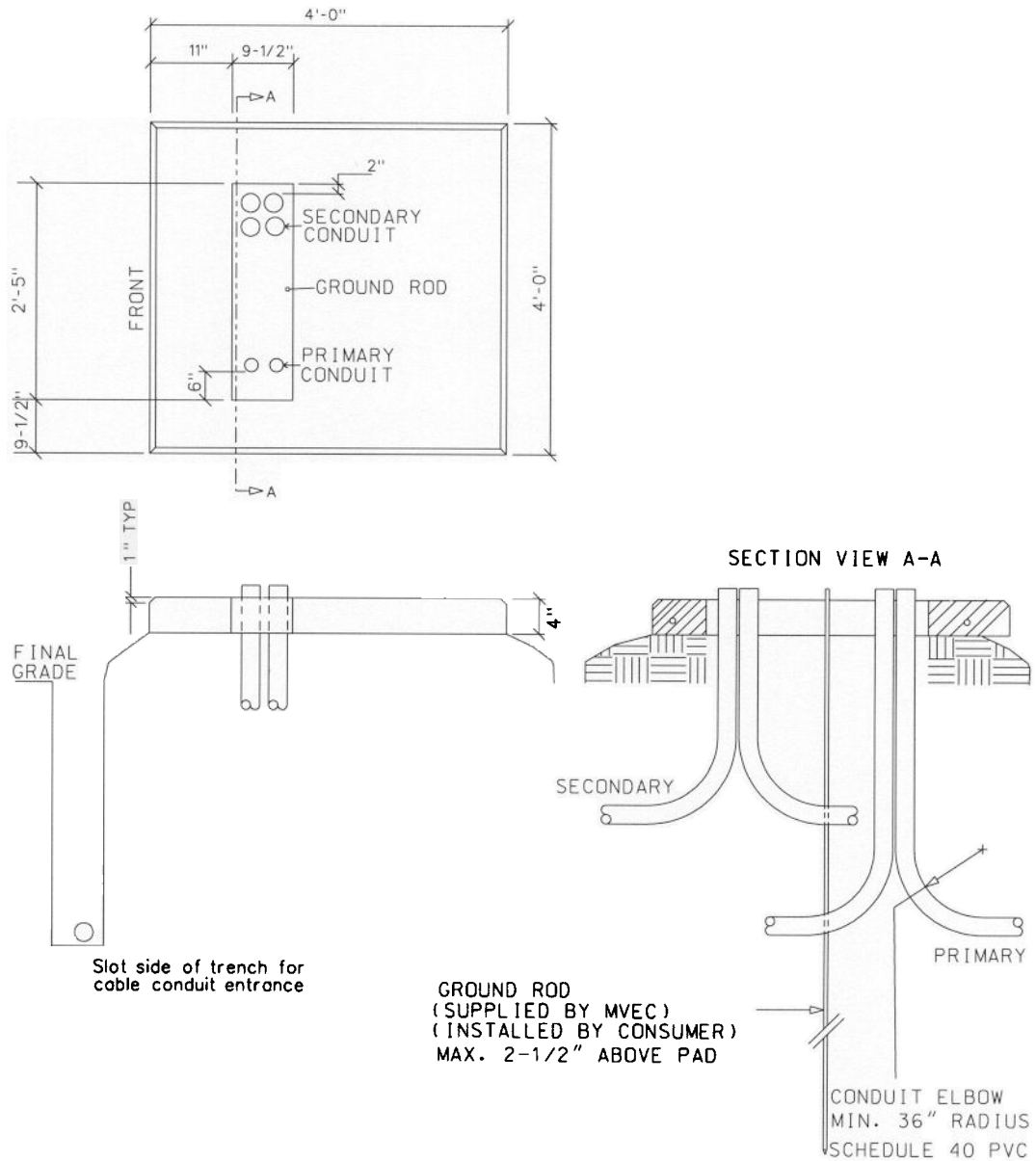


# PAD ASSEMBLY FOR SINGLE PHASE PADMOUNT TRANSFORMER



## NOTES:

1. PAD ASSEMBLIES INCLUDE SITE PREPARATION, BEDDING AND DRAINAGE.
2. A CLEAR AREA SHOULD BE MAINTAINED FOR 10 FEET IN FRONT OF PADMOUNT.
3. CONDUITS SHOULD BE IN FRONT BUT NOT UNDER WEIGHT OF TRANSFORMER.
4. PRIMARY CONDUIT IS 48" BELOW FINAL GRADE  
SECONDARY CONDUIT IS 36" BELOW FINAL GRADE