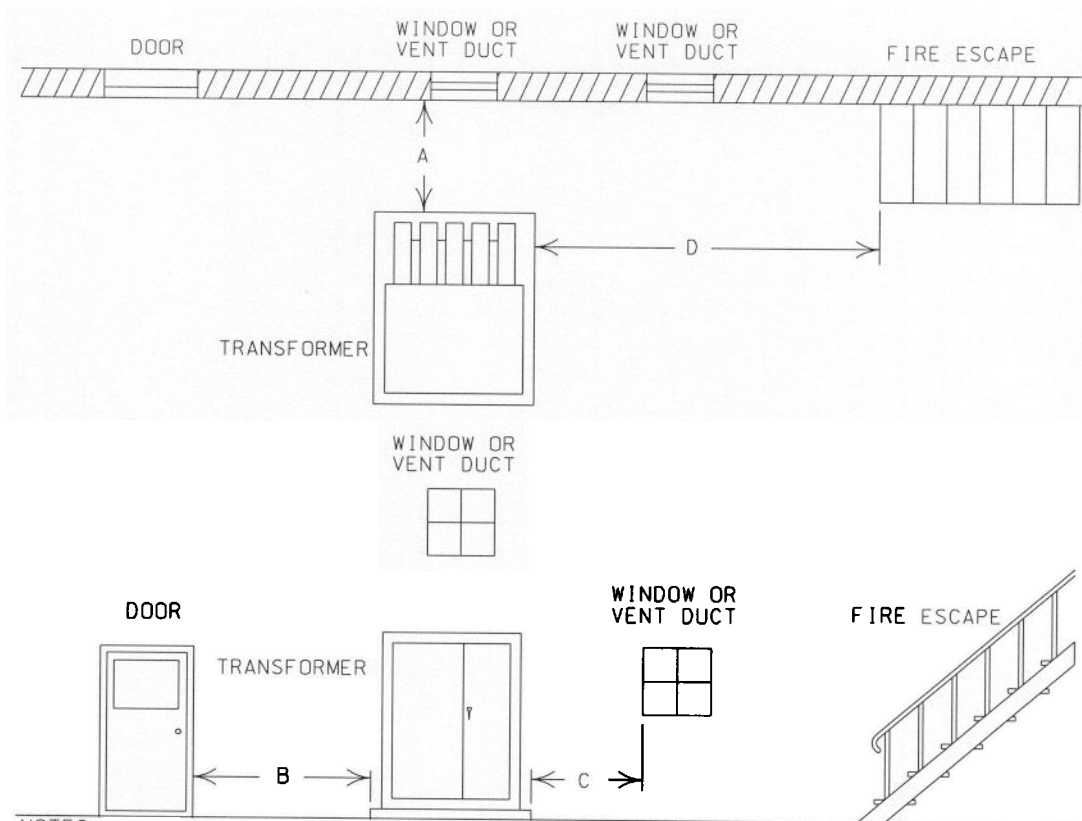


# CLEARANCE REQUIREMENTS FOR OIL FILLED TRANSFORMERS AT BUILDINGS



## NOTES:

1. MAINTAIN A MINIMUM OF 10' CLEARANCE IN FRONT OF TRANSFORMER FROM LANDSCAPE AND STRUCTURES FOR ACCESS. ADEQUATE SPACE REQUIRED FOR TRUCKS AND LIFTING EQUIPMENT.
  2. DRAINAGE FLOW AROUND TRANSFORMER SHOULD BE AWAY FROM BUILDING.
  3. NO COOLING TOWERS, GAS METERS, ETC., WITHIN 5' OF PAD.
  4. NO PIPES OR CONDUITS UNDER PAD EXCEPT THOSE REQUIRED FOR TRANSFORMERS CONNECTIONS. EXCEPTIONS ALLOWED IF APPROVED BY MVEC.
  5. NO PART OF BUILDING MAY EXTEND OVER TRANSFORMER.
  6. FRONT OF TRANSFORMER FACING AWAY FROM BUILDING
  7. IF TRANSFORMER SUBJECT TO VEHICULAR DAMAGE INSTALL BARRIERS
  8. SEE OTHER SKETCHES FOR PAD, BARRIERS, AND CONDUIT. PAGES (50-59)
- RIGHT VIEW
- I. MINIMUM DIMENSIONS- FROM BRICK OR MASONRY BUILDING: (SEE GUIDANCE IN NFPA-255-1990 AND IEEE STANDARDS)
    - A. 5' IN FRONT OF A WALL WITHOUT A WINDOW OR WITH A WINDOW 12' HIGH,  
8' IN FRONT OF A WALL WITH A FIRE SAFETY GLASS WINDOW AND WINDOW LESS THAN 12' ABOVE GROUND,  
12' IN FRONT OF A WALL WITH A WINDOW LESS THAN 12' HIGH
    - B. 8' ON THE SIDE OF DOORS.
    - C. 5' ON THE SIDE OF WINDOWS OR VENTS IF LESS THAN 12' ABOVE GROUND.
    - D. 20' AWAY FROM BOTTOM OF THE FIRE ESCAPE.
  - II. MINIMUM DIMENSIONS FROM BUILDING THAT IS NOT BRICK / MASONRY: (SEE GUIDANCE IN NFPA-255-1990 AND IEEE STANDARDS)
    - A. 1. (TRANSFORMER SIZE 75KVA OR LESS)
      - 10' IN FRONT OF WALL WITH WINDOW OR WITH A WINDOW 12' HIGH OR HIGHER
      - 10' IN FRONT OF WALL WITH FIRE SAFETY GLASS WINDOW & WINDOW IS BELOW 12'
      - 12' IN FRONT OF WALL WITH A WINDOW LESS THAN 12' HIGH
    2. (TRANSFORMER SIZE IS BETWEEN 100KVA- 333KVA)
      - 20' IN FRONT OF A WALL
    3. (TRANSFORMER SIZE IS LARGER THAN 333KVA)
      - 30' IN FRONT OF A WALL